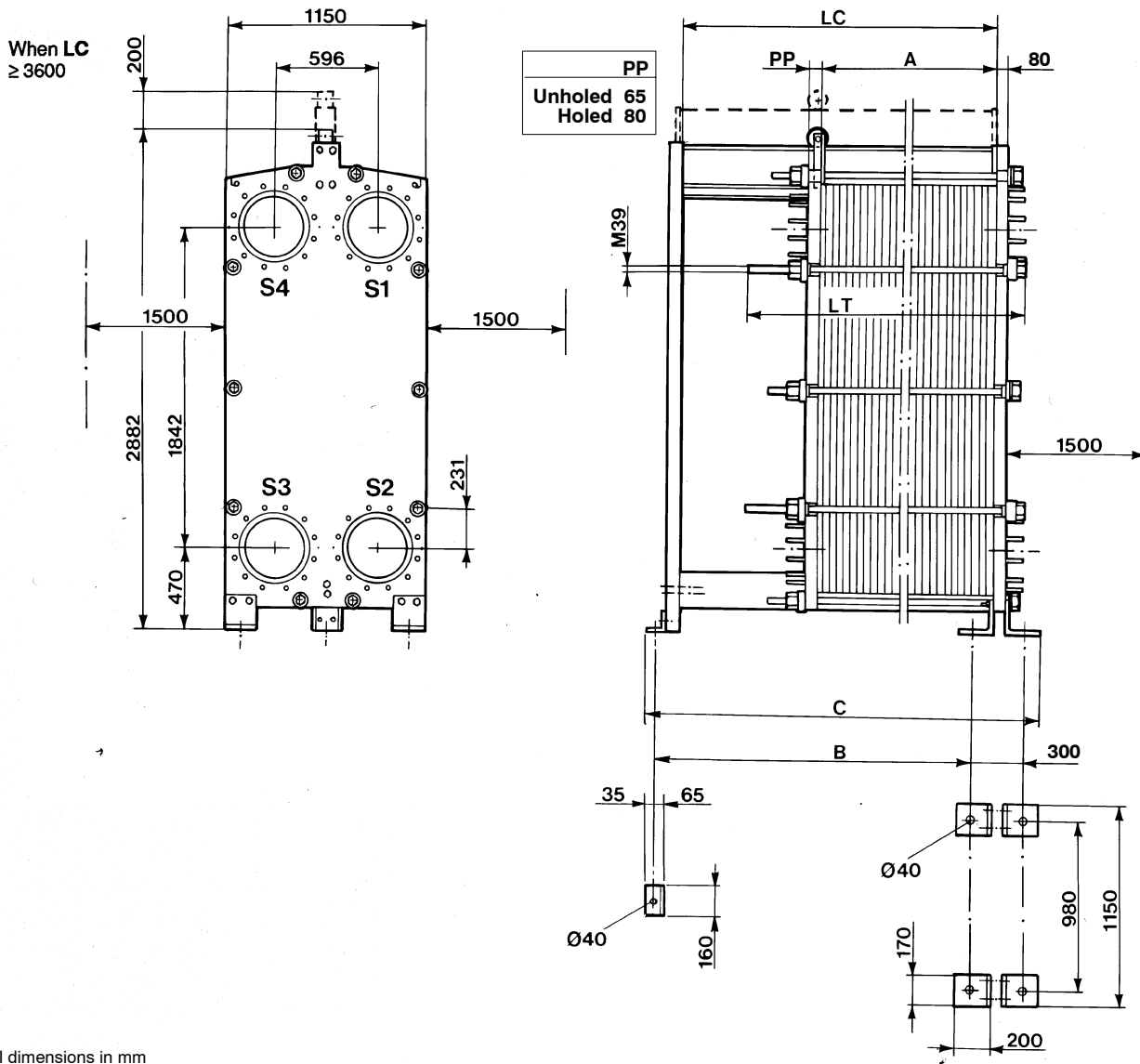


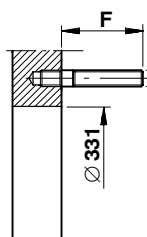


PHE-TYPE M30-FM ALS

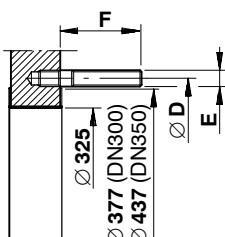


CONNECTION TYPES

1. Unlined connection

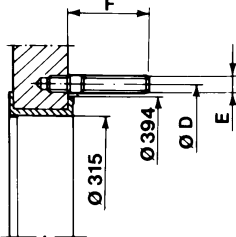


2. Sheet lining



3. Rubber spool

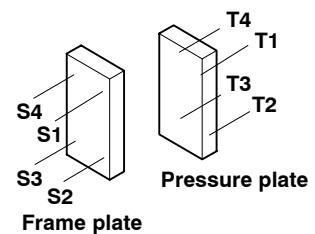
Only for frame plate DN350, DN14"



STANDARD•	D	E	F	No. of stud bolts
DIN PN10 DN300	400	M20	104	12
DIN PN10 DN350	460	M20	104	16
ASME 150 DN12"	431.8	7/8" - 9 UNC	102	12
ASME 150 DN14"	476.2	1" - 8 UNC	118	12
JIS 10K DN300	400	M22	72	16
JIS 10K DN350	445	M22	72	16

Connection standard DIN PN10 also valid for EN1092 PN10 and GB PN10 and GOST PN10

CONNECTION LOCATIONS



LOCATION	MEDIA	CONN.TYPE

- Only connection DN300 in the pressure plate

Date	No.	Edition	Dept.
0506	32200-14101	1	PC CHE