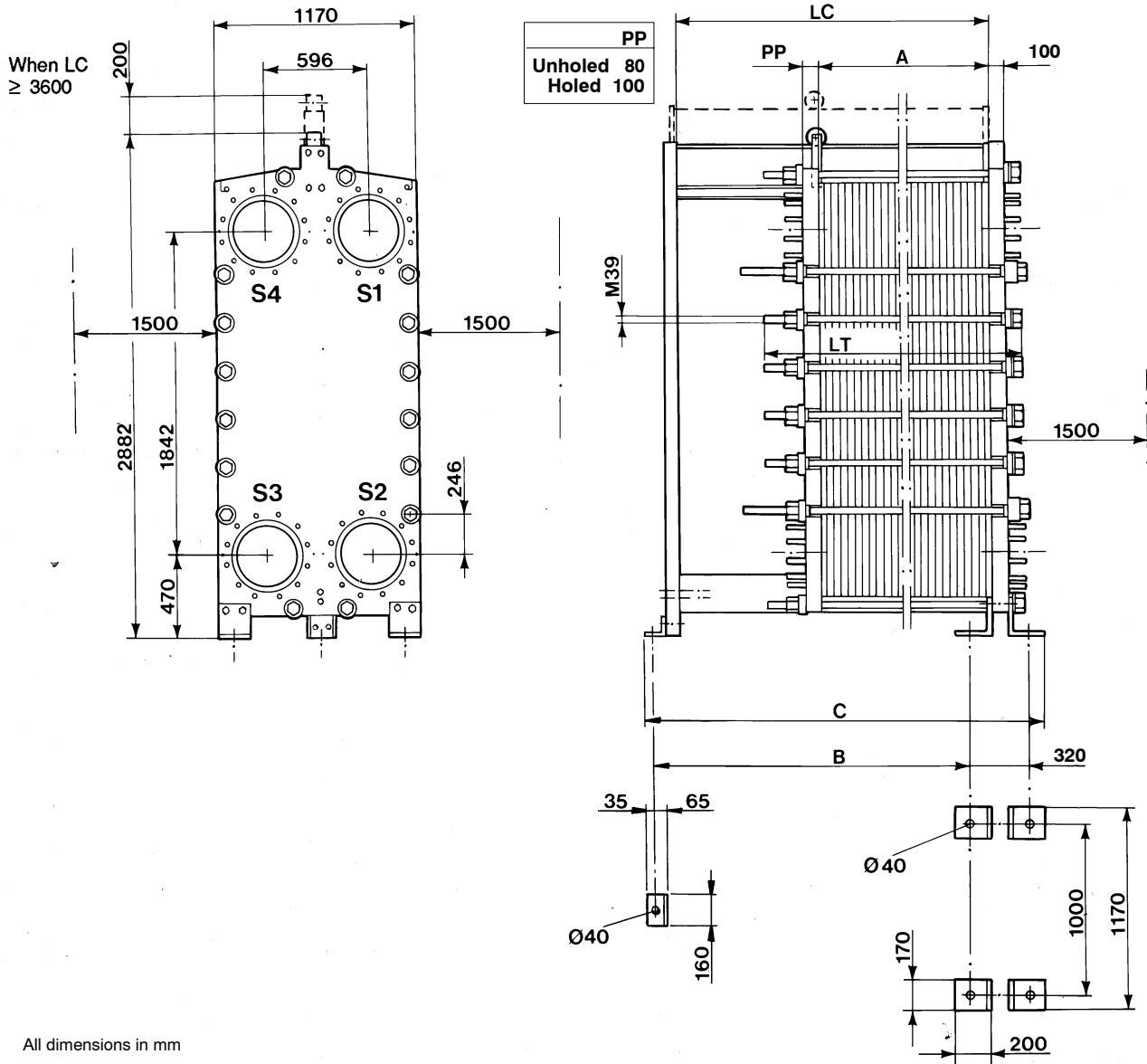




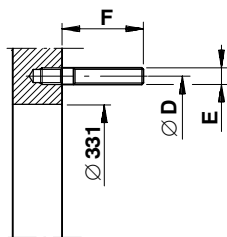
# PHE-TYPE M30-FG ALS



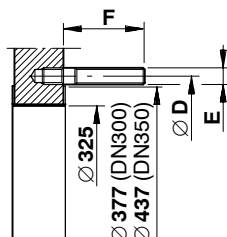
All dimensions in mm

## CONNECTION TYPES

### 1. Unlined connection

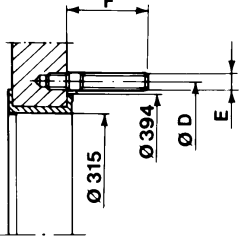


### 2. Sheet lining



### 3. Rubber spool

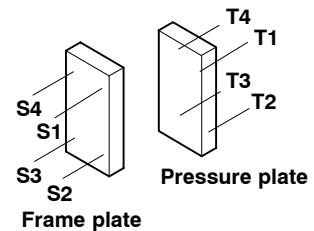
Only for frame plate DN350, DN14"



STANDARD●	D	E	F	No. of stud bolts
DIN PN16 DN300	410	M24	110	12
DIN PN16 DN350	470	M24	110	16
ASME 150 DN12"	431.8	7/8" - 9 UNC	102	12
ASME 150 DN14"	476.2	1" - 8 UNC	118	12
JIS 16K DN300	430	M24	110	16
JIS 16K DN350	480	M30	102	16

Connection standard DIN PN16 also valid for EN1092 PN16 and GB PN16 and GOST PN16

## CONNECTION LOCATIONS



LOCATION	MEDIA	CONN.TYPE

● Only connection DN300 in the pressure plate

Date	No.	Edition	Dept.
0506	32200-14111	1	PC CHE