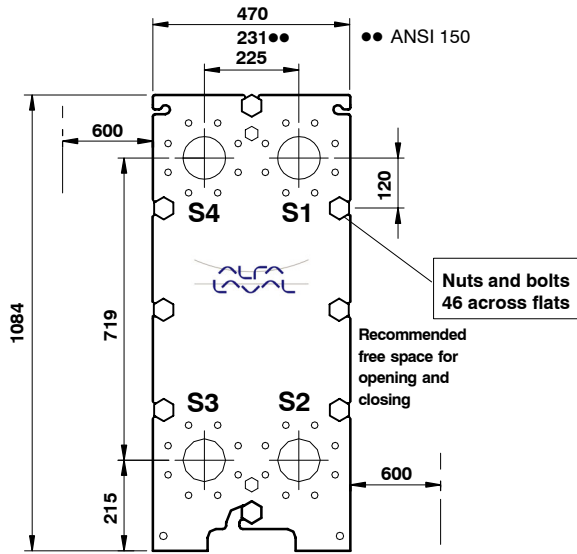
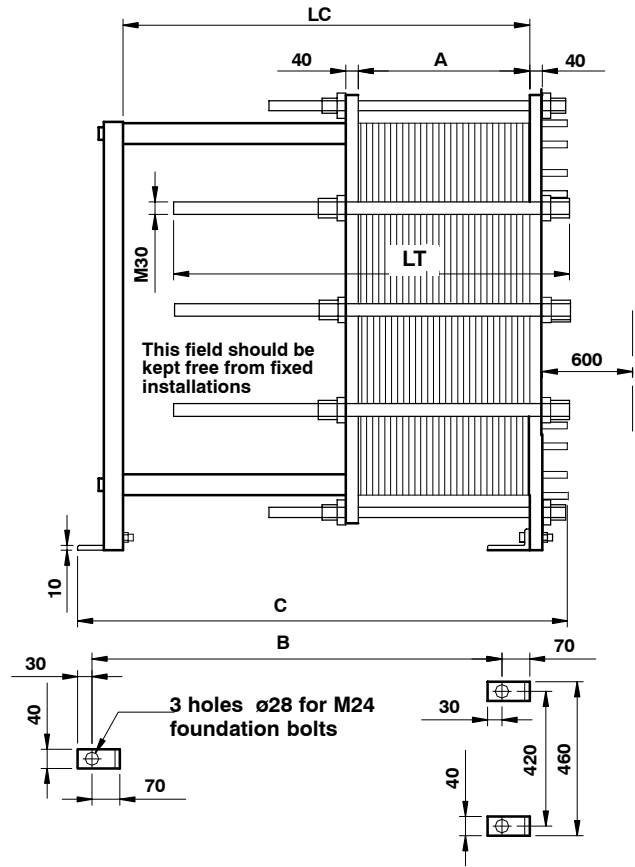




# Plate heat exchanger type M10-BFG CE



All dimensions in mm

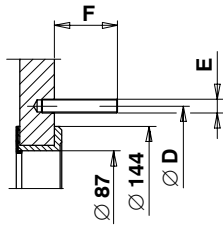
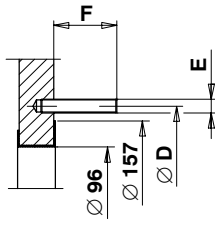
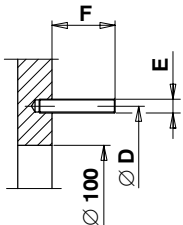


## CONNECTION TYPES IN FRAME PLATE

1. Unlined connection

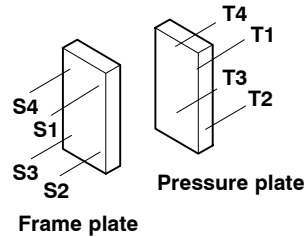
2. Sheet lining

3. Rubber spool



STANDARD	D	E	F	No. of stud bolts
DIN PN16	180	M16	69	8
ANSI 150	191	5/8" 11 UNC	69	8

## CONNECTION LOCATIONS



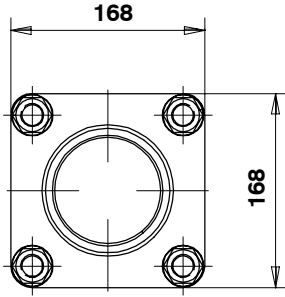
LOCATION	MEDIA	CONN.TYPE

QUOTATION NO.		
ORDER NO.		
ITEM NO.		
CALCULATION NO.		
PREPARED	CHECKED	APPROVED

Connections in pressure plate see reverse side.

Date	No.	Edition	Dept.
0412	32200-11411	1	PPD-F

# CONNECTION TYPES IN PRESSURE PLATE



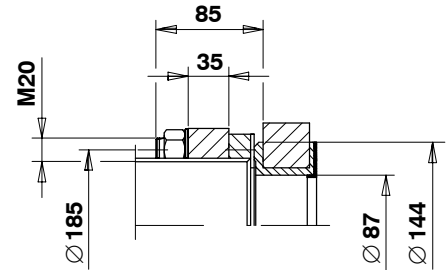
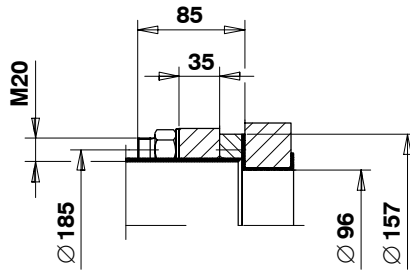
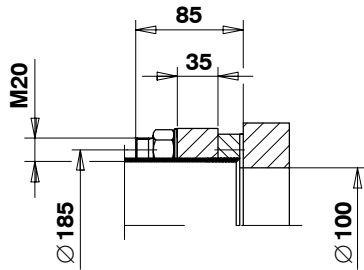
**Special loose flange.  
Delivered with the PHE.**

**DIN PN16 Loose flange with welding collar (not delivered with the PHE) according to DIN 2642.**

**1. Unlined connection**

**2. Sheet lining**

**3. Rubber spool**



**ANSI 150 Loose flange with stub end (not delivered with the PHE) according to MSS SP-43, Sch 10S.**

**4. Unlined connection**

**5. Sheet lining**

**6. Rubber spool**

