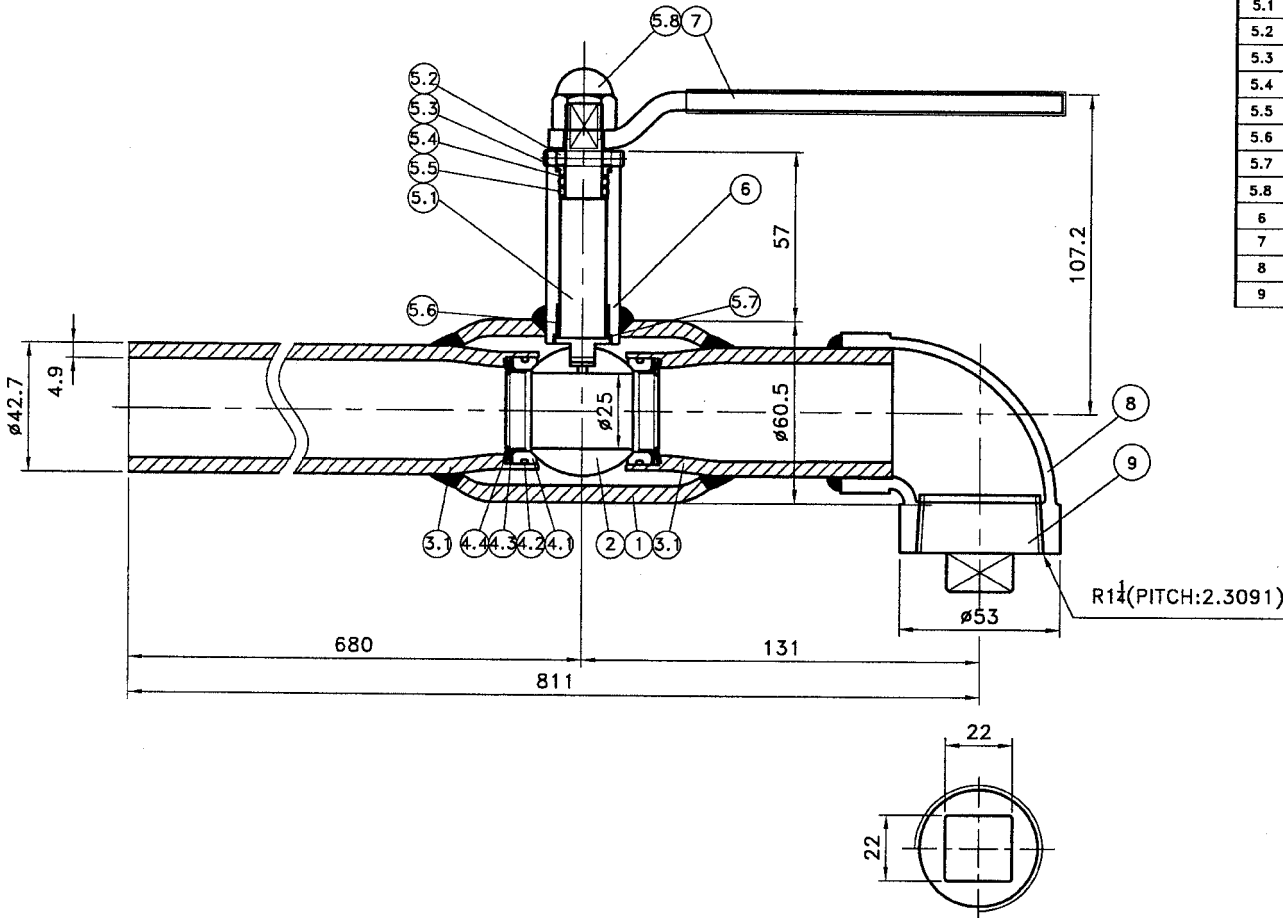
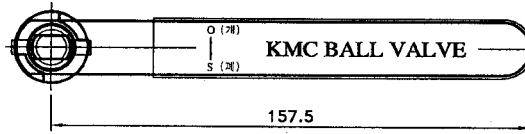


DN32-PN25



NO.	DESCRIPTION	MATERIALS	Q'TY	REMARK
1	BODY	#137 (SPPS 38)	1	DN40 SCH.40(3.7t)x73.6L
2	BALL	AISI304	1	#28/SPHERE
3.1	END PIECE	SPPS38	1	DN32xSCH80(4.9t)x665.6L
3.2	END PIECE	SPPS38	1	DN32xSCH80(4.9t)x86.6L
4.1	SEAT RING	PTFE+C	2	#22.8x#16.6x6L
4.2	O RING	VITON	2	AS018/I.D18.77x#1.78
4.3	SUPPORT RING	SCP1	2	#22.5x#16.6x4L(0.5t)
4.4	CUP SPRING	SK5M	2	#22.4xx#15.2x2.3L(1t)
5.1	STEM	STS410	1	#16x74.8L
5.2	STOPPER PIN	SUJ2	1	#3.95x24L
5.3	BACKUP RING	AISI304	1	#15.6x#10.4x3.5L
5.4	THRUST RING	PTFE+C	3	#10x#14x1t
5.5	O RING	VITON	2	P10A/#2.4
5.6	DU BUSH	SPCB+PTFE	1	DU1310
5.7	THRUST BEARING	PTFE+C	1	#13x#17x1t
5.8	CAP NUT	SS400+Zn	1	M12x1.75P
6	NECK	SM20C	1	#24x#15.4x65L
7	HANDLE	SS400+Zn	1	6t
8	ELBOW(90°)	A105	1	32A ELBOW
9	PLUG	304S.S	1	R1 1/2(PITCH:2.3091)



NOTE  
1. All dimension are in mm.

△						
△						
△						
△						
△						
REV No.	REVISION DESCRIPTION	DATE	DRAWING by	CHECKED by	APPROVED by	

DESIGNED by	CHECKED by	APPROVED by	SCALE	CLIENT	MTL
H.S Kang	<i>[Signature]</i>	<i>[Signature]</i>	1 / 1	TITLE	WELD END DN32-PN25 VENT VALVE WITH HAND LEVER OPERATED
08. 04. 01	08. 4. 4	08. 4. 4	UNIT		
			mm		
			DRAWING No.	REV No.	
			B1-R11032-025-00-H	0	