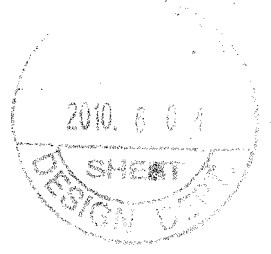


| NO. | DESCRIPTION    | MATERIALS     | Q'TY | REMARK |
|-----|----------------|---------------|------|--------|
| 1   | BODY           | st37(SPPS380) | 1    |        |
| 2   | BALL           | STS304-TP     | 1    |        |
| 3.1 | END PIECE      | st37(SPPS380) | 2    |        |
| 3.2 | END FLANGE     | A105          | 2    |        |
| 4.1 | SEAT RING      | PTFE+C        | 2    |        |
| 4.2 | O RING         | FPM           | 2    |        |
| 4.3 | SUPPORT RING   | SCP1          | 2    |        |
| 4.4 | CUP SPRING     | SK5M          | 2    |        |
| 5.1 | STEM           | AISI410       | 1    |        |
| 5.2 | PIN STOPPER    | SUJ2          | 1    |        |
| 6.1 | NECK           | AISI1020      | 1    |        |
| 6.2 | THRUST BEARING | PTFE+C        | 1    |        |
| 6.3 | DU BUSH        | PTFE+SPCB     | 2    |        |
| 6.4 | THRUST RING    | PTFE+C        | 2    |        |
| 6.5 | O RING         | FPM           | 2    |        |
| 6.6 | BACKUP RING    | AISI1045+ENP. | 1    |        |
| 7   | HANDLE         | SPP+Zn        | 1    |        |

| SIZE  | A   | B   | C   | D   | T  | f | h    | L   | H     | W     |
|-------|-----|-----|-----|-----|----|---|------|-----|-------|-------|
| DN15  | 10  | 47  | 65  | 95  | 16 | 2 | 4-14 | 130 | 85.8  | 128.5 |
| DN20  | 15  | 58  | 75  | 105 | 18 | 2 | 4-14 | 150 | 90.3  | 128.5 |
| DN25  | 20  | 68  | 85  | 115 | 18 | 2 | 4-14 | 160 | 103.3 | 157.5 |
| DN32  | 25  | 78  | 100 | 135 | 18 | 2 | 4-14 | 180 | 107.2 | 157.5 |
| DN40  | 32  | 88  | 110 | 145 | 18 | 3 | 4-18 | 200 | 119.6 | 230.3 |
| DN50  | 40  | 102 | 125 | 160 | 20 | 3 | 4-18 | 230 | 125   | 230.3 |
| DN65  | 50  | 122 | 145 | 180 | 22 | 3 | 8-18 | 270 | 175.8 | 300   |
| DN80  | 65  | 133 | 160 | 195 | 24 | 3 | 8-18 | 280 | 186.1 | 300   |
| DN100 | 80  | 158 | 190 | 230 | 24 | 3 | 8-22 | 300 | 210.6 | 400   |
| DN125 | 100 | 184 | 220 | 270 | 26 | 3 | 8-26 | 325 | 227.8 | 400   |
| DN150 | 125 | 212 | 250 | 300 | 28 | 3 | 8-26 | 350 | 249   | 450   |

CONFIDENTIAL



NOTE  
1. All dimension are in mm.

| REV No. | REVISION DESCRIPTION | DATE | DRAWING by | CHECKED by | APPROVED by |
|---------|----------------------|------|------------|------------|-------------|
| △       |                      |      |            |            |             |
| △       |                      |      |            |            |             |
| △       |                      |      |            |            |             |
| △       |                      |      |            |            |             |
| △       |                      |      |            |            |             |

| DESIGNED by | CHECKED by         | APPROVED by        | SCALE | CLIENT                      |
|-------------|--------------------|--------------------|-------|-----------------------------|
| J. H. YANG  | <i>[Signature]</i> | <i>[Signature]</i> | 1 / 1 | TITLE                       |
| 10.06.04    | 10.6.4             | 10.6.4             | UNIT  | FLANGED END DN32~DN150-PN25 |
|             |                    |                    | mm    | REGULAR PORT BALL VALVE     |
|             |                    |                    |       | WITH HAND LEVER OPERATED    |



| DRAWING No.         | REV No. |
|---------------------|---------|
| 3B1-R13150-025-00-H | 0       |